

BSPB Selector Valves

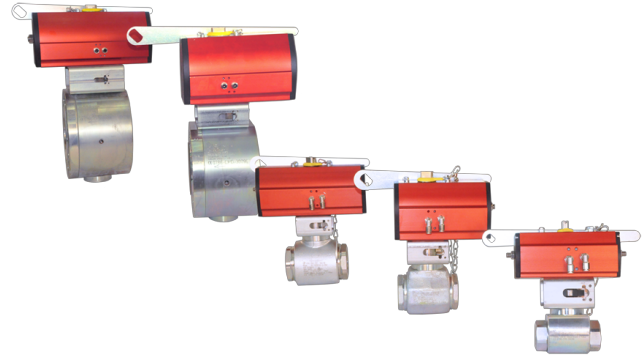
FEATURES

- For Approvals, see the “Compatibility” table.
- REACH and RoHS compliant

DESCRIPTION

The BSPB selector valves route the agent from a central cylinder bank to the relevant area being protected. All BSPB selector valves are 2-way ball valves with full bore. The selector valve actuator operates pneumatically from manifold pressure routed through a pressure regulator on the backplate manifold and the respective backplate solenoid valve.

Selector have BSPB threaded inlet and outlet ports for connection to the distribution piping for sizes 1, 1 1/2, and 2 inches. For 3 in. and 4 in. selector valves, uses DIN 2638 flanges to connect to the system piping.



SPECIFICATIONS

Working Pressure (Nominal):

Valve: 140 Bar (2030 Psi)

Actuator: 8 Bar (116 Psi)

Temp Range(s):

FM Approved / UL Listed: -4° to 130°F (-20° to 54°C)*

*Unless superseded by local/national standards

Limit Switch:

Switch: NO or NC

Voltage (Max): AC-15: 240 V / 4 A

DC-13: 24 V / 1 A

Insulation (Ui): 500 V

ORDERING INFORMATION

Part Number	Description	Weight
22-37140-025	1 in. Selector valve, DN 25, 8-10 Bar Actuator	11.5 lbs (5.2 kg)
22-37140-040	1 1/2 in. Selector valve, DN 40, 8-10 Bar Actuator	20.3 lbs (9.2 kg)
22-37140-050	2 in. Selector valve, DN 50, 8-10 Bar Actuator	12.7 lbs (28 kg)
22-37140-080	3 in. Selector valve, Flange DN 80, 8-10 Bar Actuator	116 lbs (52.6 kg)
22-37140-100	4 in. Selector valve, Flange DN 100, 8-10 Bar Actuator	180.8 lbs (82 kg)

Note: Selector valves sizes 1 in., 1 1/2 in. and 2 in. are BSPT threaded. Use an adapter at both ends for NPT threaded pipes.

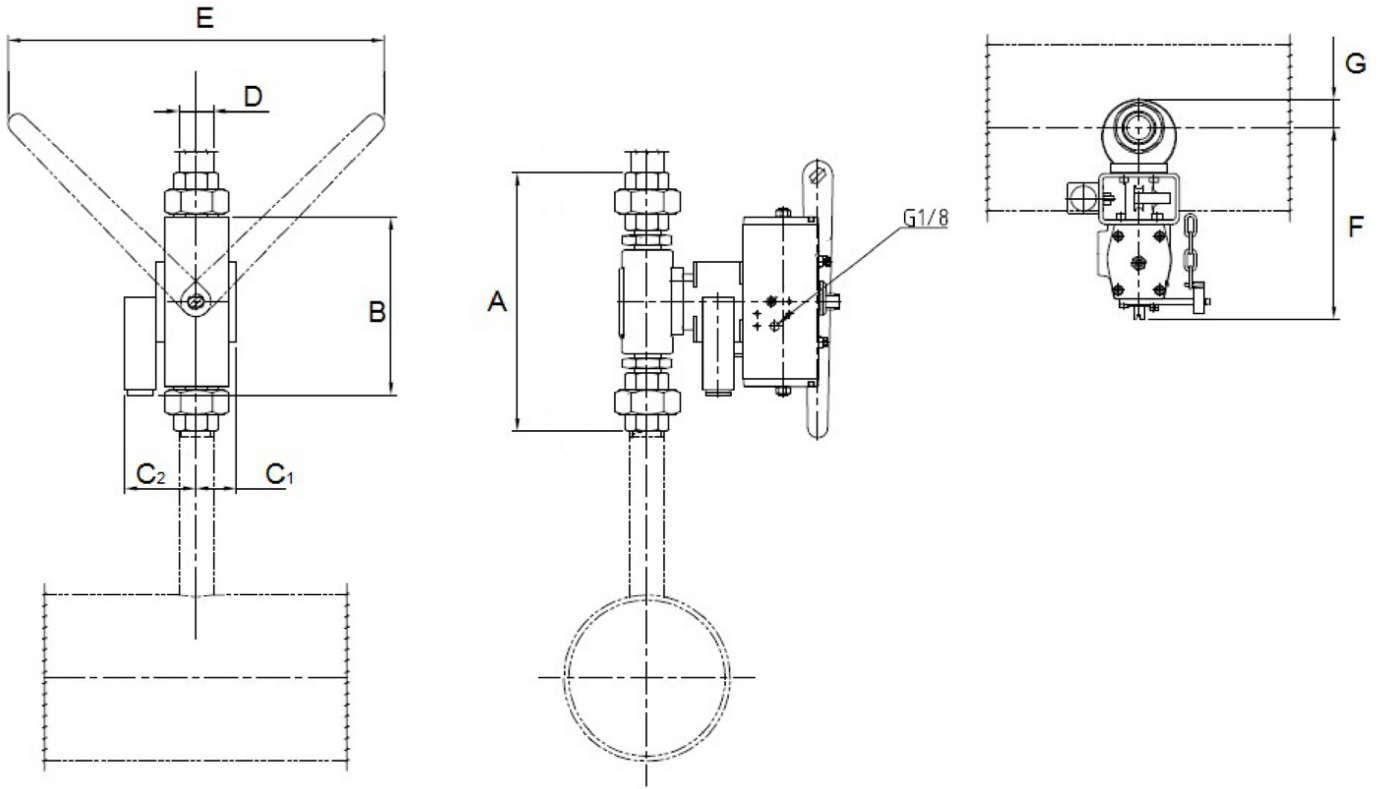


Figure 1. DN 25, 40, and 50 Selector Valves

Table 1: DN 24, 40, and 50 Selector Valve Dimensions (in inches)

Part Number	D	A	B	C ₁	C ₂	E	F	G
22-37140-025	1" BSPP	10.1	7.0	1.6	2.8	14.7	7.5	1.1
22-37140-040	1-1/2" BSPP	11.5	7.3	1.9	2.8	14.4	9.5	1.7
22-37140-050	2" BSPP	13.1	9.6	2.0	2.8	14.4	9.8	2.1

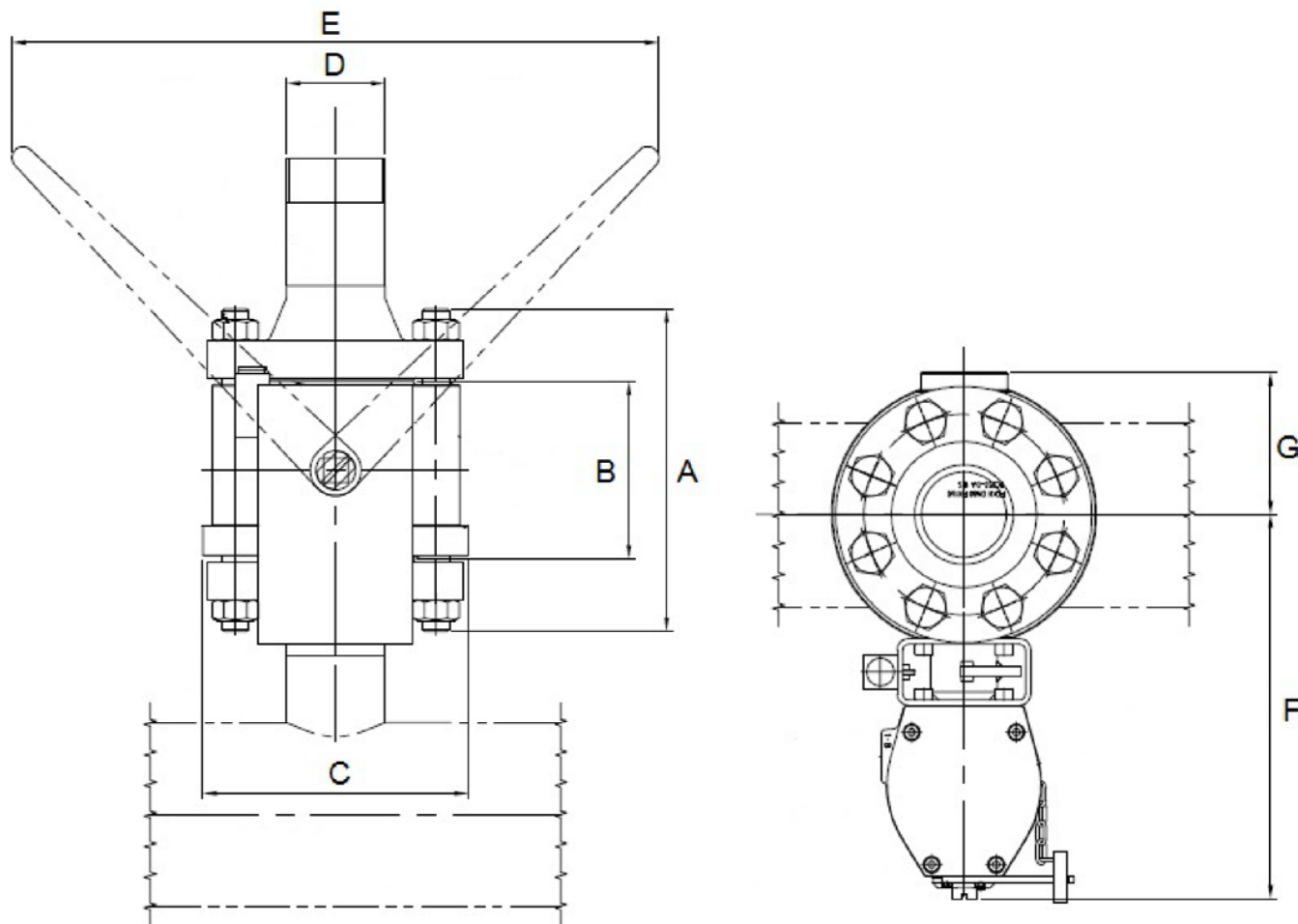


Figure 2. DN 80 and 100 Selector Valves

Table 2: DN 80 and 100 Selector Valve Dimensions (in inches)

Part Number	D	A	B	C	E	F	G
22-37140-080	3"	11.4	6.3	9.4	22.9	13.6	5.0
22-37140-100	4"	13.0	7.5	10.9	22.9	15.2	6.0

Note: Selector valves sizes 1 in., 1 1/2 in. and 2 in. are BSPT threaded. An adapter is needed at both ends for NPT threaded pipes.

Table 3: Selector Valve Adapter Part Numbers

Part Number	Description
01-3711-3000	1" BSPT (M) to NPT (F) Adapter (2 required per valve, entry/exit)
01-3711-4000	1 1/2" BSPT (M) to NPT (F) Adapter (2 required per valve, entry/exit)
01-3711-5000	2" BSPT (M) to NPT (F) Adapter (2 required per valve, entry/exit)

Use flanges to connect the system piping to the 3" and 4" Selector valves.

ACTUATION HOSE ADAPTER

To connect the actuation hose to the selector valve, use one of the following adapters:

Table 4: Selector Valve Hose Adapter Part Numbers

Part Number	Description
15-8662-0042	Selector Valve Hose Adapter For 1", 1 1/2" and 2" Selector Valves
15-8662-0041	Selector Valve Hose Adapter For 3" and 4" Selector Valves

COMPATIBILITY

Series	DIOM P/N	Approvals
Kidde Fire Systems Natura™ Inert Gas System	06-237619-001	UL, FM
Kidde Fire Systems ECS-500™ System	06-237585-001	UL, ULC, FM
Kidde Fire Systems ADS™ for use with Fluoroketone Fire Suppression Agents	06-237256-001	UL, ULC, FM
Kidde Fire Systems ADS™ with HFC-227ea Agent	06-236068-001	UL, ULC, FM
Kidde Fire Systems ECS™ 360 for use with Fluoroketone Fire Suppression Agents	06-236553-001	UL, ULC, FM
Kidde Fire Systems ECS™ 360 with HFC-227ea Agent	06-236115-001	UL, ULC, FM

Kidde Fire Systems, Kidde Fire Protection and Fenwal Controls branded products are created exclusively by Kidde-Fenwal, LLC, 400 Main St, Ashland, MA 01721, USA. All trademarks are the property of their respective owners.

This literature is provided for informational purposes only. Kidde-Fenwal, LLC believes this data to be accurate, but it is published and presented without any guarantee or warranty whatsoever. Kidde-Fenwal, LLC assumes no responsibility for the product's suitability for a particular application. The fire suppression system design, installation, maintenance, service and troubleshooting must be performed by trained, authorized Kidde Fire Systems distributors for the product to work correctly. If you need more information on this product, or if you have a particular problem or question, contact: Kidde-Fenwal, LLC, Ashland, MA 01721 USA, Telephone: (508) 881-2000.

